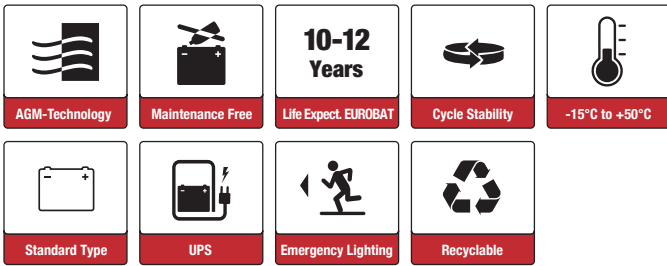




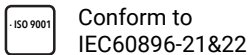
SBL33-12i (12V33Ah)



Applications

- Uninterruptable Power Supply (UPS)
- Electric Power System (EPS)
- Emergency backup power supply
- Emergency light
- Railway signal
- Alarm and security system
- Communication power supply
- DC power supply

Certificates



Specifications

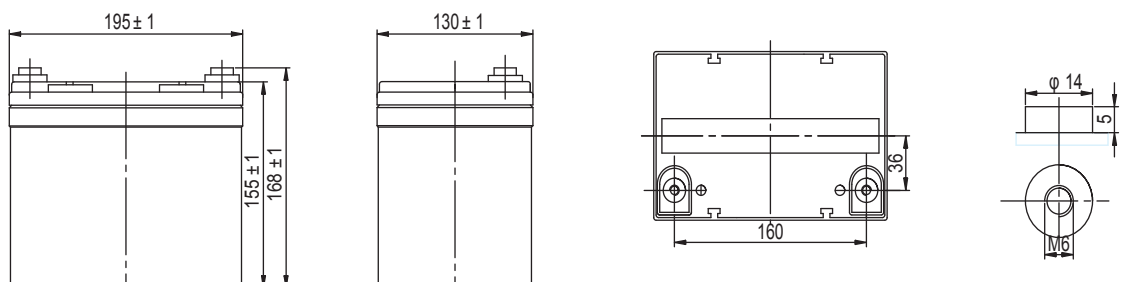
Nominal Voltage	12V	Operating Temp. Range	Discharge: -20~50°C
Nominal Capacity	33.0Ah (C ₁₀ , 10.8V)		Charge: -10~50°C
Approx. Weight	9.7kg		Storage: -20~50°C
Terminal	M6	Cycle Use	Initial Charging Current less than 9.9A.
Container Material	ABS UL94 HB		Voltage 14.55V +-1% at 20°C.
Rated Capacity (20°C)	35.0Ah/1.75A,20hr, 10.8V	Standby Use	Temperature Coefficient -30mV/°C.
	33.0Ah/3.30A,10hr, 10.8V		No limit on Initial Charging Current.
	31.36Ah/3.92A,8hr, 10.5V		Voltage 13.65V +-1% at 20°C.
	27.90Ah/5.58A,5hr, 10.5V		Temperature Coefficient -20mV/°C.
	24.75Ah/8.25A,3hr,10.5V	Capacity affected by Temp.	40°C 103%
	22.3Ah/22.3A,1hr, 9.6V		25°C 100%
Max. Discharge Current	330A (5s)		0°C 86%
Internal Resistance / Impedance (1kHz)	Approx. 12mΩ	Self Discharge	SSB batteries may be stored for up to 6 months at 20°C and then a freshening charge is required. For higher temperatures the time interval will be shorter.
Nominal Oper. Temp. R.	20±3°C	Life Expectancy	10-12 years according to EUROBAT



Dimensions

■ M6 Terminal

Unit: mm | Dimensions: 195 Length X 130 Width X 155 Height (168 Height incl. Terminal)



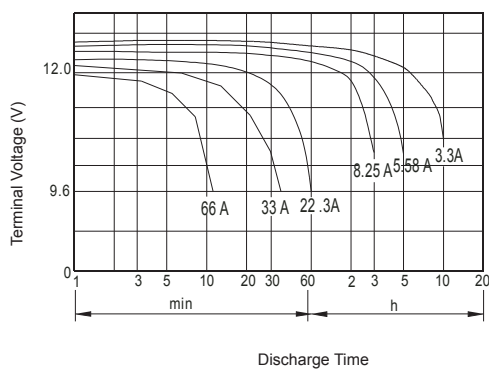
Constant Current Discharge (Amperes) at 20°C

F.V/Time	10min	15min	30min	1h	1.5h	2h	3h	5h	6h	8h	10h	20h
1.60V/cell	69.3	57.1	32.6	22.3	16.6	12.8	9.08	6.3	5.38	4.15	3.36	1.81
1.65V/cell	65	54.1	31.3	21.9	16.3	12.6	8.97	6.25	5.23	4.07	3.35	1.79
1.70V/cell	60	51.4	30.4	21.2	15.8	12.1	8.45	6.15	5.09	3.99	3.32	1.78
1.75V/cell	56.1	47.8	29.4	20.3	15.1	11.65	8.25	5.58	4.95	3.92	3.31	1.76
1.80V/cell	51.4	44.8	28.8	19.8	14.8	11.42	8.18	5.5	4.81	3.85	3.30	1.75

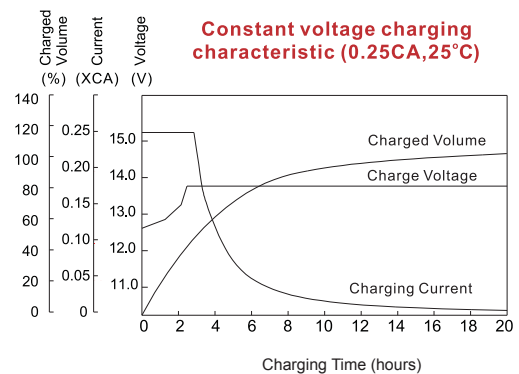
Constant Power Discharge (Watts/cell) at 20°C

F.V/Time	10min	15min	30min	45min	1h	1.5h	2h	3h	5h	8h
1.60V/cell	122	100	65.3	45.5	40.9	30.4	23.3	17.4	12.2	6.48
1.65V/cell	116	98.6	61.7	44.2	40.5	30.2	23.1	17.3	11.9	6.32
1.70V/cell	110	95.7	61.7	43.5	39.9	29.6	22.6	16.8	11.5	6.1
1.75V/cell	104	92	58	42.5	39.1	28.9	21.8	16	11.3	6
1.80V/cell	97.7	89	56	41.5	38.3	28.1	21	15.2	11	5.84

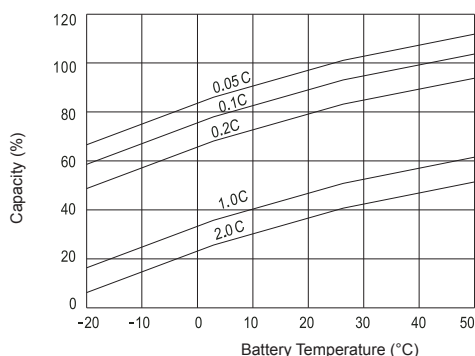
Discharge Characteristics



Float Charging Characteristics



Temperature Effects in Relation to Battery Capacity



Effect of Temperature on Long Term Float Life

